

INSTRUCTIONAL TECHNOLOGY

---

Pensacola Junior College

# Creating Web Photo Galleries

# Table of Contents

<b>Table of Contents .....</b>	<b>1</b>
Introduction.....	2
What is Adobe Photoshop.....	2
Creating the Web Gallery .....	2
Choosing the Page Style .....	3
Choosing Options.....	3
Banner .....	3
Gallery Images.....	4
Gallery Thumbnails .....	4
Custom Colors .....	5
Selecting the Source Directory .....	5
Selecting the Destination Directory .....	6

## Introduction

One of the great advantages of the web is the ability to display photographs. A popular method to do this is the use of web photo galleries. Creating these web-based photo galleries used to be a time-consuming venture, however, several programs are available to automate the process of creating these galleries. We will use Adobe Photoshop to demonstrate.

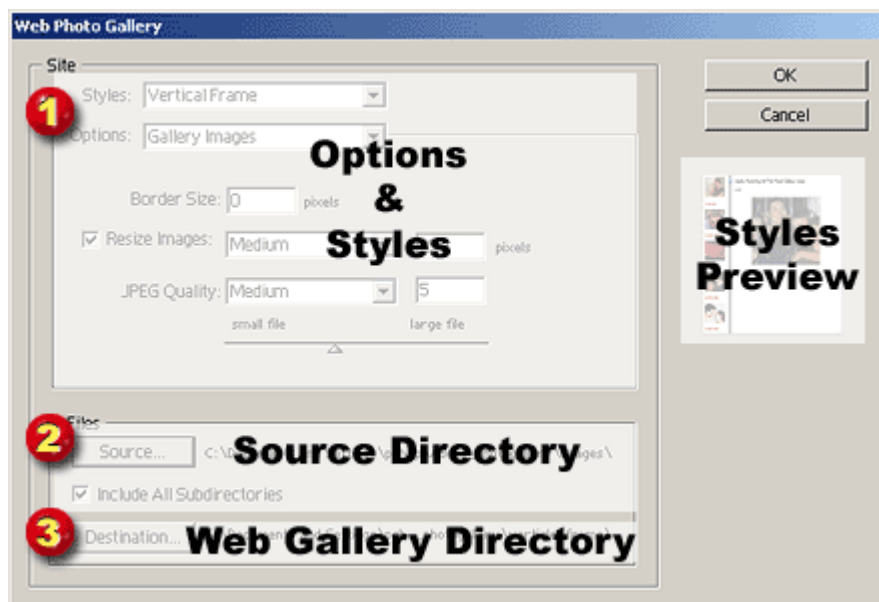
## What is Adobe Photoshop

Adobe Photoshop is generally considered the industry standard in the image editing programs and many competing programs model their features after it. Photoshop is used by a wide variety of professionals in the printing, publishing, multimedia, internet and artistic communities. Recent versions have responded to these professionals requesting the automations of time consuming and often mundane tasks, such as web galleries.

## Creating the Web Gallery

Of course, to create a photo gallery, you need images. Digital cameras, flatbed scanners, and royalty-free image collections are the most popular sources, and always be sure to observe copyright and fair use guidelines. After gathering the images, you should color balance and adjust the levels as needed. When the images are as perfect as you can make them, place them in a directory.

To create a gallery, we need to: (1) specify the gallery style and options, (2) tell Photoshop where the files are located and (3) specify the destination directory the gallery will be created in. To begin, open Adobe Photoshop. After the program loads, go to the File menu, select Automate and then Web Photo Gallery.(File/Automate/Web Photo Gallery).



## Choosing the Page Style

The first thing to do is to decide the HTML web page style you want from the styles drop-down menu.

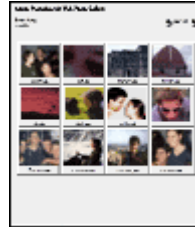
### Horizontal Framed



### Simple



### Table



### Vertical Framed



You are given a choice of horizontal or vertical framed documents, table-based and simple. For this exercise, choose “Simple”.

## Choosing Options

There are 4 sets of options to choose: Banner, Gallery Images, Gallery Thumbnails and Custom Colors.

### Banner

Set the site title and provide the author's name here. Other options in this section include font characteristics and the ability to list the date if desired.

Options:

Site Name:

Photographer:

Date:

Font:

Font Size:

### Gallery Images.

This option category allows you to put a border around your image, resize your images, and affect the JPEG quality the images are saved to.

Options: Gallery Images

Border Size: 0 pixels

Resize Images: Medium 350 pixels

JPEG Quality: Medium 5

small file large file

### Gallery Thumbnails

This category allows you to manipulate the thumbnail settings, including thumbnail size , how the thumbnails are displayed and caption information.

Options: Gallery Thumbnails

Caption:  Use Filename  Use File Info Caption

Font: Arial Font Size: 3

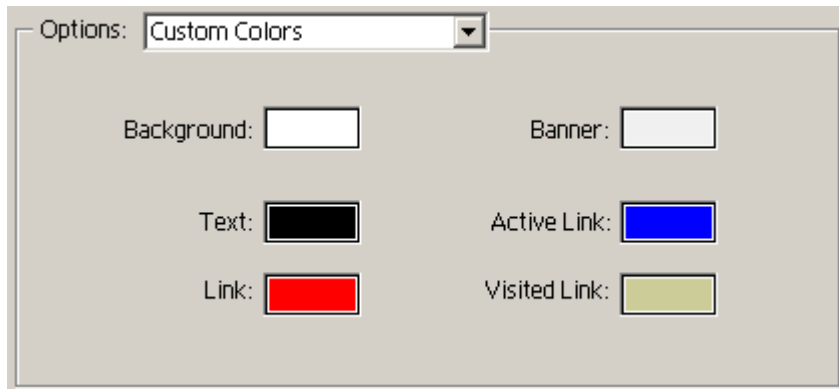
Size: Medium 75 pixels

Columns: 4 Rows: 3

Border Size: 0 pixels

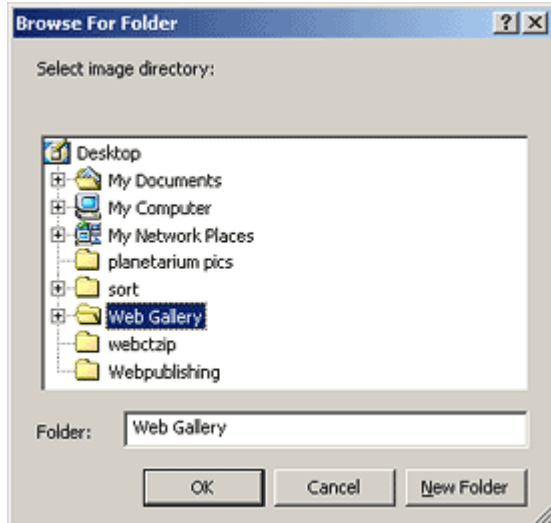
## Custom Colors

The final options dialog sets custom colors if you do not want to use the default color setup. The background color for the web page can be set by clicking the color box next to “Background”. The banner color, text and link colors can be changed in a similar fashion.



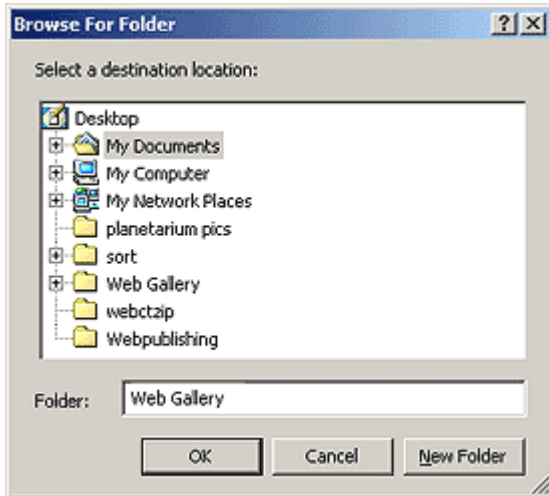
## Selecting the Source Directory

Photoshop needs to know where the images that will undergo the automated process are located. To select the proper directory, click browse, and find the directory, and click “OK”.



## Selecting the Destination Directory

Finally, the directory the gallery is to be placed in during the automated process must be defined. Be sure this directory is not a subdirectory in the source directory, or the process will fail.



Once the automated process is complete, you should have a working web photo gallery. This gallery can be edited using any HTML editor, and can be uploaded to your website.