

INSTRUCTIONAL TECHNOLOGY

---

Pensacola Junior College

# SSH Secure Shell

## 3.2.5

# Table of Contents

- Table of Contents..... 1**
- What is SSH Secure Shell?..... 2
- Where to Get Secure Shell ..... 2
- Downloading and Installing Secure Shell..... 2
- Connecting to a Remote Computer Using Secure Shell..... 3
- Transferring Files ..... 5
- SSH Secure Shell Toolbars ..... 7
  - File Transfer Basic Toolbar .....8
  - Profiles Bar .....8
  - File Bar.....8
- Additional Information ..... 8

## What is SSH Secure Shell?

SSH Secure Shell is an application designed to encrypt information sent over the Internet, therefore allowing you to securely transfer files between your computer and a remote computer by protecting the TCP/IP connections between them.

## Where to Get Secure Shell

Secure Shell for your workstation or home computer can be downloaded from the Web at: <ftp://metalab.unc.edu/pub/packages/security/ssh/>. The filename is *SSHSecureShellClient-3.2.5.exe*. The Secure Shell for Workstations User Manual is available from the help menu within the program. It is also available in Adobe Acrobat format at: <http://www.ssh.com/documents/30/ssh2winclient.pdf>

## Downloading and Installing Secure Shell

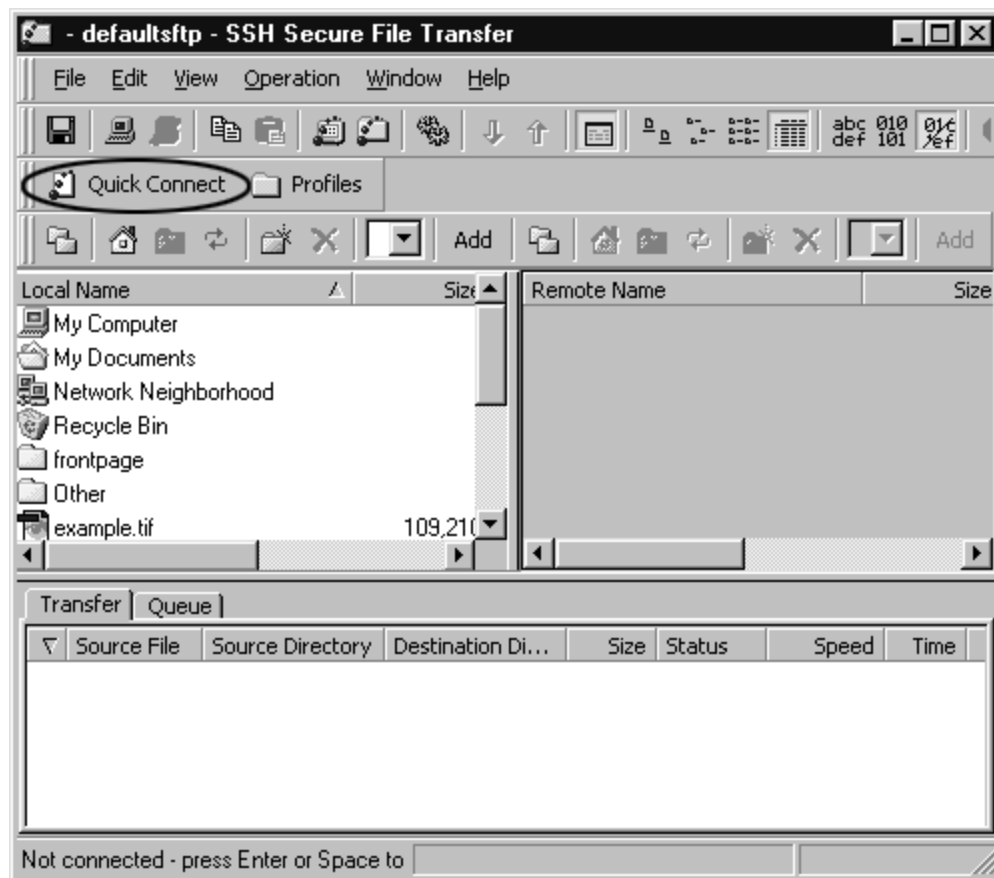
1. Go to: <ftp://metalab.unc.edu/pub/packages/security/ssh/> and double-click on *SSHSecureShellClient-3.2.5.exe* (located near the bottom of the list) to begin the download.
2. In the File Download box that pops up, make sure **Save this program to disk** is selected and click **OK**.
3. Save the program on your desktop so you can find it easily. Click **Save**.
4. If the Download box is still on your screen when the download is complete, click **Open**. (If the download box closed when the download completed, go to your desktop and click on the **SSH Secure Shell** icon.) The setup wizard should begin.
5. In the Welcome screen, click **Next**.
6. On the License Agreement screen, click **Yes**.
7. Accept the default settings for the rest of the installation by clicking **Next** on the subsequent screens.
8. When the setup is complete, click **Finish**.
9. SSH Secure Shell should now be installed on your computer!

## Connecting to a Remote Computer Using Secure Shell

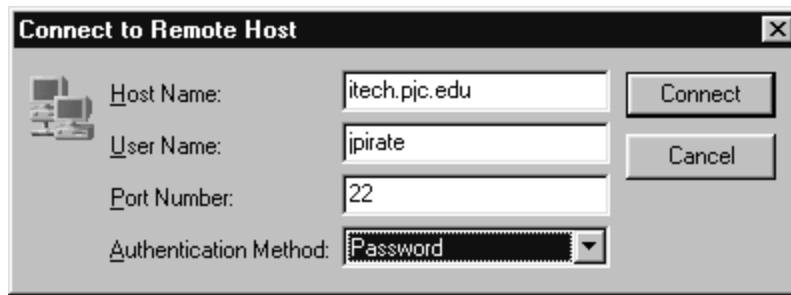
After downloading, there should be two new “shortcut” icons on your desktop. One is named SSH Secure Shell Client and the other is named SSH Secure File Transfer Client. The **SSH Secure File Transfer Client is the application you will use to transfer files.**



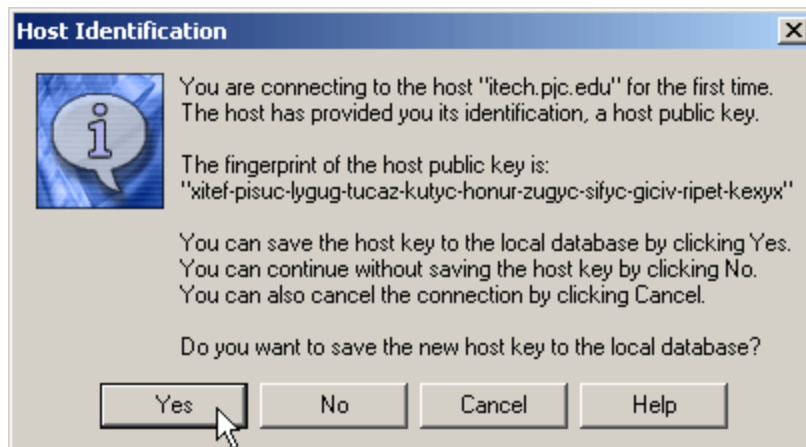
1. There are two ways to open the SSH Secure File Transfer Client application. You can open it from the shortcut icon on your desktop (SSH Secure File Transfer) or you can go to **Start > Programs > SSH Secure Shell > Secure File Transfer Client**. A screen like the one below will appear. The files on your local computer will be visible in the left pane. Once a connection is established, the files on the remote computer will be visible in the right pane.



2. To establish a connection go to **File > Quick Connect** or just click on the **Quick Connect** button on the toolbar. A Connect to Remote Host box like the one on the next page will appear.

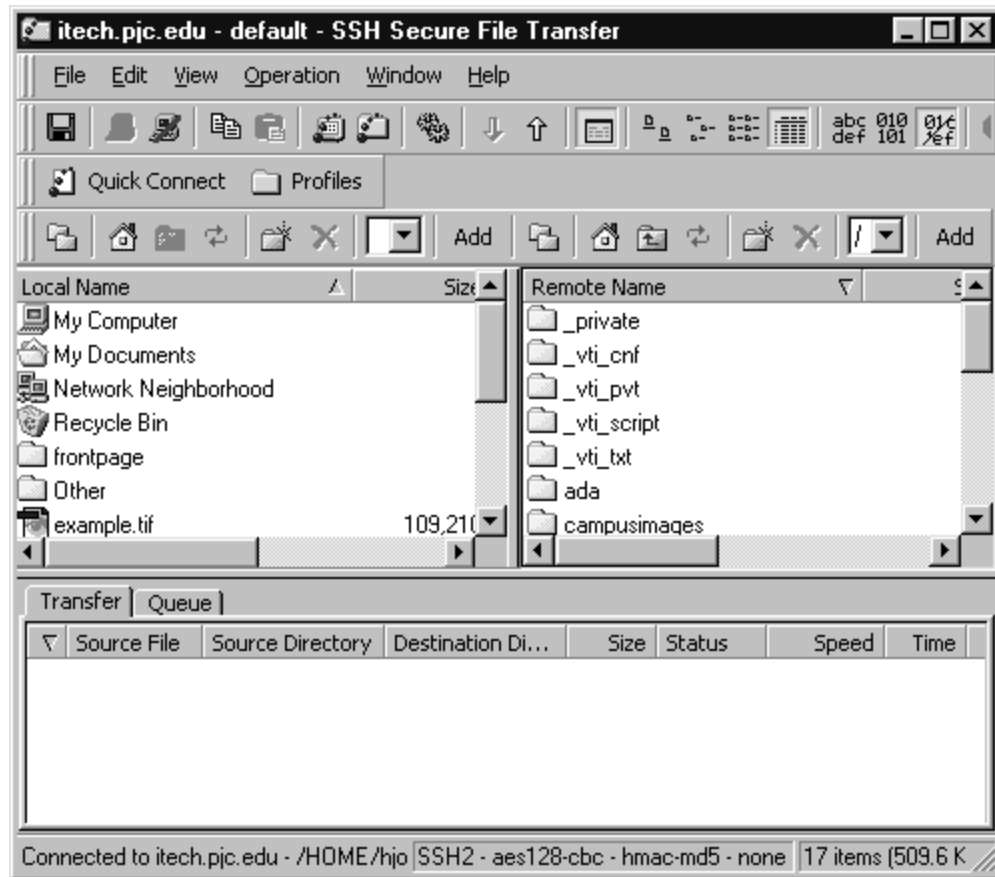


3. In the **Host Name** field enter **itech.pjc.edu**.
4. In the **User Name** field enter your user name.
5. For **Port Number** enter **22** if it's not there.
6. For **Authentication Method** make sure **Password** is selected from the drop down menu.
7. Click on the **Connect** button.
8. If you are connecting to the server for the first time, a Host Identification box like the one below will appear asking if you want to save the host key. Click **Yes**.



9. In the next box enter your password, and Click **OK**. (Remember the password is case sensitive.)



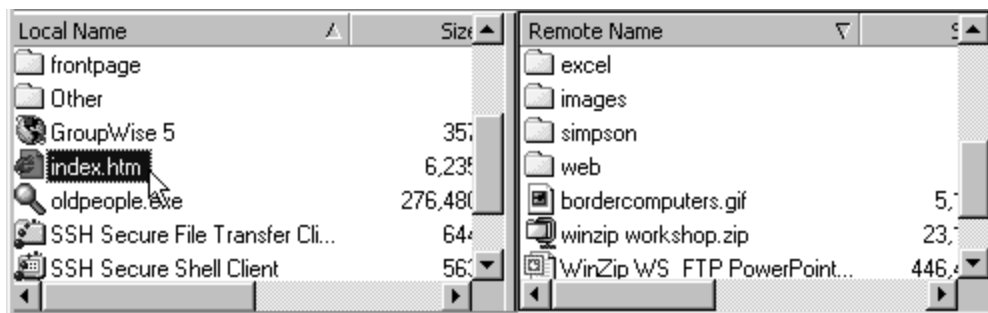


10. When connected, the files from your local computer will be visible in the left pane and the remote server computer files will show up in the right pane.

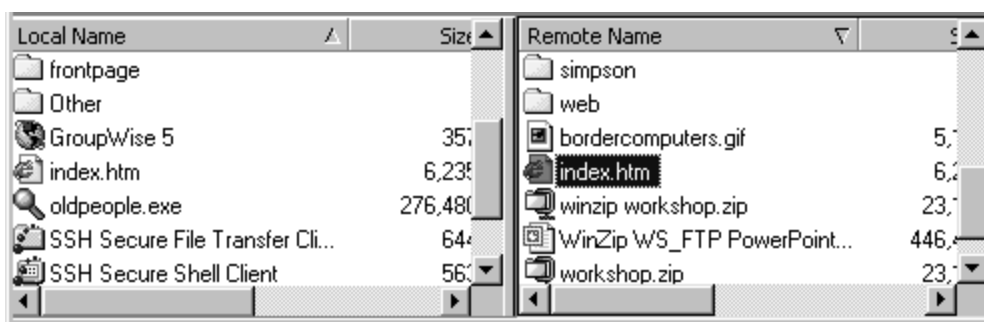
## Transferring Files

Transferring files using SSH Secure Shell is easy. All you need to do is click and drag.

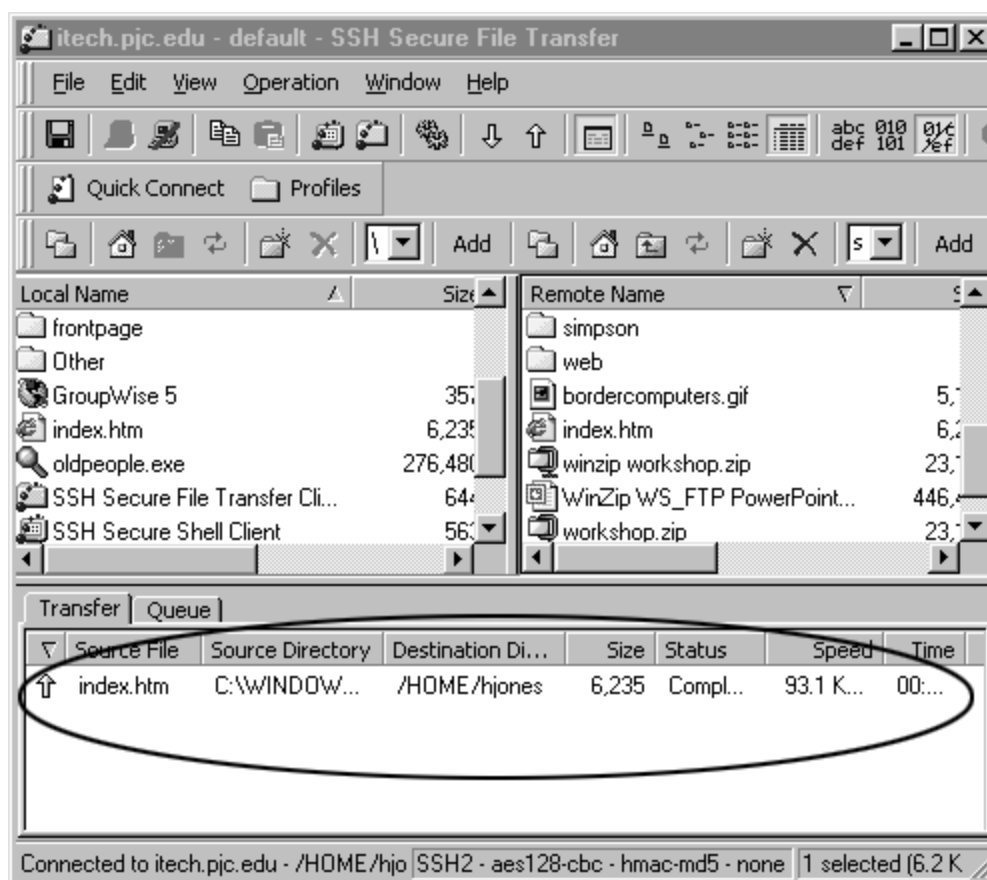
1. To transfer a file from your computer to the server, simply locate the file in the left pane, click on it, hold the mouse button down, and drag the file to the right pane of the program window. You can transfer more than one file at a time by holding the Ctrl button while clicking on files.



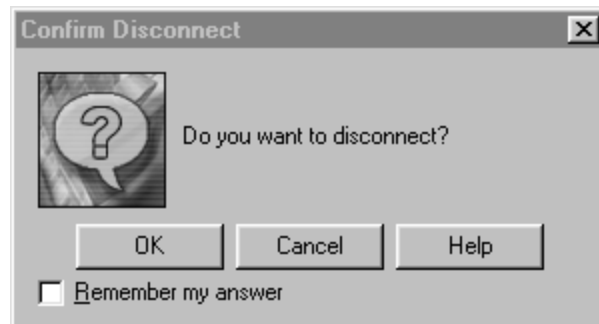
- The file you transferred now appears in the right pane.



- To transfer files from the server to your computer you'll do just the opposite. First, make sure the file's destination folder on your computer is opened in the left pane. Next, locate the file in the right pane, and then click and drag it to the left pane.
- Transferring files is not necessarily instamatic, especially if you're moving more than one file, or moving large files. The transfer view pane located at the bottom of the Secure Shell window lets you see the status of files being transferred.



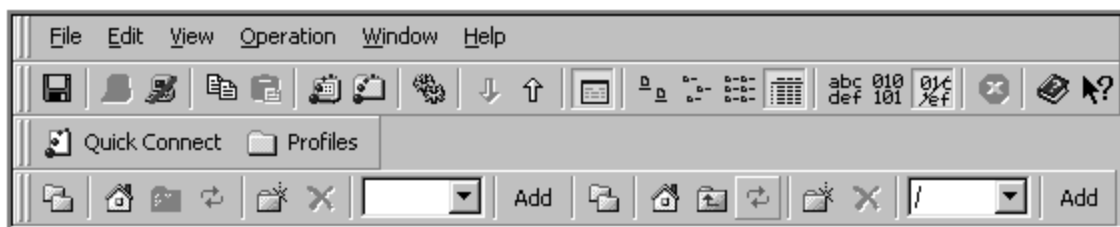
5. When you are done transferring files between computers, remember to end your session by clicking the Disconnect button on the toolbar or by going to **File > Disconnect**.



6. A Confirm Disconnect dialog box will open. Click **OK** to end the connection. And if you do not want to see this dialog box again, select the **Remember my answer** check box.

## SSH Secure Shell Toolbars

Now that you know how to transfer files between computers, let's take a look at the menus and toolbars. The most important functions of SSH Secure Shell can be accessed using the toolbars. The toolbars are located at the top of the window, right under the menu bar. The graphic below shows the default layout for the toolbars.



1. You can customize the look of the toolbars by grabbing them by their “handle,” the two vertical lines on the left hand side, and then dragging and dropping them to a new location. They can float freely in the Secure Shell window or be anchored to the top, bottom, or either side of the window.
2. If you customize the toolbar, to make the new positions permanent use the Save Settings option. This is done by clicking on the diskette icon (located under the File menu) or by going to **File > Save Settings**.
3. If you want to return the toolbars to their original positions, go to **View > Reset Toolbars**.
4. A dialog box will open asking if you really want to discard the changes you have made. By clicking **Yes**, the toolbars will return to their original configuration.



## File Transfer Basic Toolbar



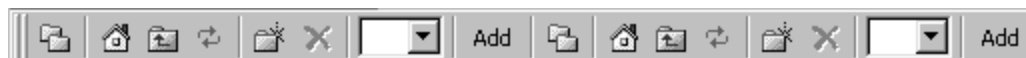
The Basic Toolbar contains buttons for the most frequently used functions in the File Transfer window. These include saving settings, connecting to and disconnecting from a remote server, copying and pasting files, opening a new terminal or file transfer window, accessing settings options, upload and download functions, transfer view pane toggle, file display choices, file transfer choices, cancel a transfer, contents, and help.

## Profiles Bar



The **Profiles** toolbar is initially located under the Basic toolbar and contains the Quick Connect and Profiles option buttons. These buttons allow a fast way to connect to different servers.

## File Bar



The **File** bar contains buttons that can be used to perform the most commonly used file management tasks. These include a toggle for showing/hiding folders, and icons for returning to the home directory, moving up from the current folder to its parent folder, refreshing contents, creating a new folder, deleting files or folders, a drop down menu for a list of favorite or commonly used directories, and adding to the current directory. There are two sets of these buttons, one for your local computer and one for the remote computer. This file bar is dynamically created, so it cannot be customized like the other toolbars.

## Additional Information

More information about Secure Shell can be found in the Contents section of the application. To access it, go to **Help > Contents**.